



**PRODUCT PROGRAMME
CONSTRUCTION 2015
MACHINES AND DIAMOND TOOLS**

Core drilling Product news

DME36 ★★★



Benefits

- The new standard in terms of compactness and weight optimization
- Maximum productivity thanks to innovative and efficient P2® drive technology
- Optimal drilling speeds using 6 preset electronic stages
- Ease of operation thanks to an intelligent user interface
- High protection class IP66 against dust and water ingress for safer working conditions

DRY DRILLING SYSTEM



Benefits

- Perfectly attuned system for dry drilling reinforced concrete
- Engageable percussion speeds up work progress in hard materials
- Soft start electronics and warning LED for optimal drilling performance
- Practical centering aid allows for precise drill bit guidance

Core drill motors



DME19DP★★★

Up to Ø 162 mm
1,8 kW
with percussion



DME22SU★★

Up to Ø 180 mm
2,2 kW
3 gears



DME20PW/PU★★★

Up to Ø 180 mm
2,0 kW
3 gears



DME24MW/UW★★★

Up to Ø 250 mm
2,2 kW
3 gears



DME33MW/UW★★★

Up to Ø 450 mm
3,3 kW
3 gears



DME36MW/UW★★★

Up to Ø 450 mm
3,6 kW (P2@-Technology)
6 gears



DGB1000★★★

Drilling gearbox
Up to Ø 1000 mm
Hydraulic and electric

Core drill bits

Wet



CD★★★ / ★★

CDL***/** und CDM***/**
Ø 12 – 1000 mm
TGD®-Technology | roof segments

Dry



DDL★★★ UNIVERSAL

DDL***/**
Ø 32 – 200 mm



DDT★★★ TILES

DDT
Ø 5 – 75 mm



DDE★★★

DDE
Ø 68 mm, 82mm
TGD®-Technology

Core drill rigs



DRS 160★★

Up to Ø 160 mm
Drill system
incl. 2,2 kW drill motor



DRA 150★★

Up to Ø 150 mm
Clamping collar 60 mm
Dowel foot



DRU 160★★★

Up to Ø 160 mm
Clamping collar 60 mm
Dowel | Vacuum



DRA/U 250★★★

Up to Ø 250 mm
ModulDrill™
Dowel | Vacuum



DRU 350★★★

Up to Ø 350 mm
360° rotation, ModulDrill™
Telescoping system



DRA/U 400★★★

Up to Ø 400 mm
ModulDrill™
Dowel | Vacuum



DRA 500★★★

Up to Ø 500 mm
ModulDrill™
Modularity with wire saw



BC-2

Up to Ø 1000 mm
2-column-guiding
Modularity with wire saw

Core drill accessories



ADAPTERS

Adapters, extensions,
sharpening plates etc.



FIXATION

Distance plates,
vacuum fixation

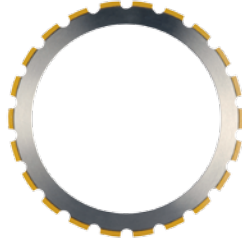
Ring saw



HRH/HRG500 ★★★

Up to Ø 500 mm
Cutting depth up to 400 mm
Hydraulic | Petrol

Ring and hand saw blades



RS ★★★

RSL*** and RSM***
Ø 366 – 506mm



HS ★★★

HSL***, HSM***, HSX***
Ø 405 – 534mm
TGD®-Technology

Floor grinding



FGE270 ★★★

Grinding width 270 mm
1,5 & 2,2 kW
Single grinding head



FGE400 ★★★

Grinding width 400 mm
4 kW
Single grinding head



FGE450 ★★★

Grinding width 450 mm
1,5 & 2,2 kW
3 grinding heads



FGE530 ★★★

Grinding width 530 mm
4 kW
3 grinding heads

Floor grinding accessories



REMOVAL

GT0*** and GT1***
Removal



GRINDING

GT2*** and GT3***
Grinding



DUST COLLECTION SYSTEM

VCE2500D***
2,2 kW



DUST COLLECTION SYSTEM

VCE4000D***
4 kW

Wall sawing Product news

WSE811 ★★★



Benefits

- The worlds lightest wall saw in its class
- Faster assembly and dismantling times thanks to a compact, fully integrated design
- Light and robust: track and blade guard
- Handy radio remote for higher mobility

Wall saws



WSE811★★★

Up to Ø 750 mm

9 kW (P2®-Technology)

Electric



WSE1217★★★

Up to Ø 1200 mm

17 kW (P2®-Technology)

Electric

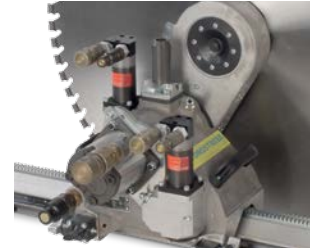


WSE2226★★★

Up to Ø 2200 mm

26 kW (P2®-Technology)

Electric



DZ-S2

Up to Ø 1200 mm

Ideal for 20 kW power pack

Hydraulic

Wall saw blades



WZ

Up to Ø 1600 mm

Ideal for 25 kW power pack

Hydraulic



FZ-4S

Up to Ø 2200 mm

Ideal for 40 kW power pack

Hydraulic



WS★★★

WSL***, WSL***-SILENT, WSM***

Ø 450 – 1200 mm

TGD®-Technology



WS★★

WSL**, WSM**, WSH**, WSM**

Ø 600 – 2200 mm

TGD®-Technology up to: 1200mm

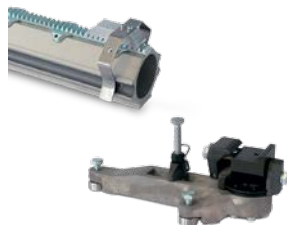
Wall saw accessories



RAILS

Aluminium rails

Steel rails



TRESTLES & STOPPER

Swivel rail trestles, stopper



BLADE GUARD

Blade guard All-In-One



BLADE GUARD

AIO 1200CL for WSE2226***

Wire sawing

Product news

SB-E



Benefits

- Modularity: Operates using WSE2226*** motor and control box
- High power transmission thanks to multiple roller drive
- Smoother operation due to Hydraulic wire tensioner
- Wire storage increasable and decreasable without tools

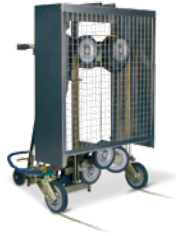
DWH ★★★-S



Benefits

- Special diamond wire for steel and non-ferrous metals
- Very fast cutting performance
- Smooth operating performance
- Very good surface quality
- Spliced version also available

Wire sawing



SK-SD

Gross wire length 10,8 m
Hydraulic



WCE/H14★★★

Gross wire length 14,2 m
Electric and hydraulic



SB-E | SB

Gross wire length 15,5 m
Electric and hydraulic



CCE/H25★★★

Circular wire saw, Ø 500 – 2500 mm
Electric and hydraulic

Diamond wire

Concrete



DW*-C**

For concrete
Electroplated and sintered
Ø 10,2 und 8,5 / 11 mm



DW*-C**

For concrete
Electroplated and sintered
Ø 10 / 11 mm

Steel



DWH*-S/SL**

For steel / non-ferrous metals
Electroplated , also as loops
Ø 11 mm



DWM*-S/SL**

For steel
Electroplated, also as loops
Ø 10,2 mm

Wire saw accessories



HAND PRESS

80 kN
Hydraulic



CONNECTORS

Cardanic and
repair connectors

Table sawing Product news

TRE250★★★



Benefits

- Longer cutting length for problem free cutting of multiple tile types
- Cleaner cuts thanks to precise saw head guidance and a robust design
- Problem free transport due to foldable feet and transport wheels
- High flexibility due to numerous available settings and application possibilities

TSU★★★ | TSU★★★-SILENT



Benefits

- Universally applicable
- Very clean, chip-free cutting edges
- New segment height
- Also available in Silent design

Table saws



TRE250★★★

Tile saw

Up to Ø 250 mm

Cutting length 1050 mm



TBE350★★

Masonry saw

Up to Ø 350 mm

Swivelling saw head



TME700★★★

Masonry saw

Up to Ø 700 mm

Mitre stop



TME1000★★★

Masonry saw

Up to Ø 1000 mm

Mitre stop

Table saw blades



UNIVERSAL

TSU*** | TSU***-Silent

Ø 250 – 1000 mm



TILES

DCT***

Ø 180 – 350 mm



MARBLE

ES-T***

Ø 250 – 350 mm

Floor saws



FSG513★★★

Up to Ø 450 mm

8,2 kW

Petrol



FSG620★★

Up to Ø 600 mm

15 kW

Petrol



FSE811★★★

Up to Ø 800 mm

7,5 kW

Electric



FSD930★★

Up to Ø 900 mm

22 kW

Diesel



FSD1049★★★

Up to Ø 1000 mm

36 kW

Diesel



FSE1240★★

Bis Ø 1200 mm

30 kW

Electric



FSD1274★★★

Up to Ø 1200 mm

55 kW

Diesel

Floor saw blades

Cured concrete



FS★★★-C

FSL***, FSM***, FSH***, FSX***

Ø 350 – 1200 mm

TGD®-Technology

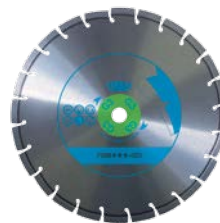


FSC★★★

Ø 300 – 800 mm

For low powered machines

Green concrete



FS★★★-G

FSL***, FSM***

Ø 300 – 600 mm



CHAMFERING

For various widths of joints

Floor saw blades

Asphalt



FS*-A**

FSL***, FSM***, FSH***

Ø 300 – 1200 mm



FSA***

Ø 300 – 800 mm

2 stages

Power packs



PPH20**

20 kW

2 stages



PPH25**

25 kW

2 stages



PPH25RR***

25 kW

4 stages

Radio remote control



PPH40RR***

40 kW

4 stages

Radio remote control

Presses



CP-110/BTH350***

Pressing force 108 / 260 t

3 / 2 cylinder strokes



POWER PACK AU

Up to 2000 bar

Crushers



CRUSHER BZ

For wall thickness 120 – 300 mm



POWER PACK BW-2

Up to 750 bar

Dry cutting saw blades



UNIVERSAL

DCU*** 4in1
 Ø 230 - 400 mm
 TGD®-Technology



UNIVERSAL

DCU***/**/*
 Also in FC, FC 4in1, S
 Ø 105 - 450 mm



HARD STONE

DCH***
 Ø 230 - 400 mm
 TGD®-Technology



HARD STONE

DCH****/*
 Also in FC
 Ø 115 - 400 mm



CONCRETE

DCC***/**
 Also in FC, LL
 Ø 115 - 400 mm



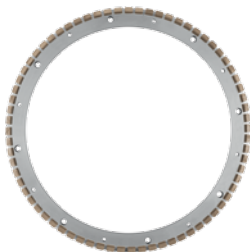
TILES & MARBLE

DCT***/*, DCM***
 Ø 100 - 350 mm



ABRASIVE

DCA***/**/*, DCA+C***, DCAB***/*
 Also in 2 in 1
 Ø 115 - 450 mm



BRICK GRINDING WHEEL***

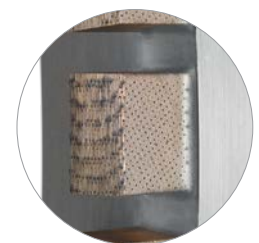
For hollow bricks
 Ø 500 - 900 mm
 TGD®-Technology

Product news

Brick grinding wheel in TGD®-Technology

The new brick grinding wheel impresses through its high stock removal rate, very long lifetime and noticeable smooth running.

- High stock removal rate and low current consumption
- Cool grinding
- Very clean, chip-free cutting edges



**TYROLIT SCHLEIFMITTELWERKE SWAROVSKI K.G.**

Swarovskistrasse 33 | 6130 Schwaz | Austria
Tel: +43 5242 606-0 | Fax: +43 5242 63398
www.tyrolit.com

**DIAMOND PRODUCTS LLC**

333, Prospect St. | P.O. Box 1080
44035-6121 Elyria | Ohio | United States
Tel: 1 440 323 46 16 | Fax: 1 440 323 86 89
www.diamondproducts.com

**GRINDING TECHNIQUES**

28 Van Eck Street | Chamdor | Krugersdorp | South Africa
Tel: +27 11 271 6400 | Fax: +27 11 271 6464
www.grindtech.com

**N.V. TYROLIT BELGIUM S.A.**

Verwelkomingsstraat 17 | 1070 Bruxelles | Belgium
Tel: 3 32 2 556 08 00 | Fax: 3 32 2 521 62 04
www.tyrolit.com

**TYROLIT A/S**

Akersbakken 12 | 0172 Oslo | Norway
Tel: +47 416 290 00 | Fax: +47 221 961 34
www.tyrolit.com

**TYROLIT AB**

Enhagsslingan 4 /Box 533 | 183 25 Täby | Sweden
Tel: +46 8 544 715 00 | Fax: +46 8 544 715 01
www.tyrolit.com

**TYROLIT OY**

c/o Tyrolit AB, box 533 | 18325 Täby | Sweden
Tel: +46 8 544 715 00 | Fax: +46 8 544 715 01
www.tyrolit.com

**TYROLIT ARGENTINA S.A.**

Cnel. Manuel E. Arias 3751-17th fl oor
C1430CRG Buenos Aires | Argentina
Tel: +54 11 5543-2200 | Fax: +54 11 5543-2232
ventas@tyrolit.com.ar | www.tyrolit.com.ar

**TYROLIT CEE K.S.**

Tovární 363 | 294 71 Benátky nad Jizerou | Czech Republic
Tel: +420 326 766 111 | Fax: +420 326 766 105
cz.info@tyrolit.com | www.tyrolit.com

**TYROLIT DO BRASIL LTDA.**

Rod. D. Gabriel Paulino Bueno Couto, Km 81,
13315-970 Cabreúva | Sao Paulo | Brazil
Tel: +55 11 45298 70 0 | Fax: +55 11 45297 25 7
www.tyrolit.com.br

**TYROLIT GMBH**

Frauenstrasse 38 | 82216 Maisach | Germany
Tel: +49 81 41 393-0 | Fax: +49 81 41 393-100
www.tyrolit.de

**TYROLIT KFT.**

Fáy U.4. | 1139 Budapest | Hungary
Tel: +361 237 14 80 | Fax: +361 237 14 89
www.tyrolit.com

**TYROLIT LDA.**

Zona Industrial do Alto da Cruz | 4780 Santo Tirso | Portugal
Tel: +351 252 859 390 | Fax: +351 252 859 361
www.tyrolit.com.pt

**TYROLIT LTD.**

Eldon Close, Crick | Northants NN6 7UD | United Kingdom
Tel: +44 845 6868 200 | Fax: +44 1788 823089
www.tyrolit.co.uk

**TYROLIT MIDDLE EAST FZE**

P.O. Box 17842 | Jebel Ali Free Zone | Dubai
Tel: +971 4 813 9111 | Fax: +971 4 813 9100
www.tyrolit.com

**TYROLIT HYDROSTRESS AG**

Witzbergstrasse 18 | 8330 Pfäffikon | Switzerland
Tel: +41 44 952 18 18 | Fax: +41 44 952 18 00
www.tyrolit.com

**Nestag Diamant- & Schleiftechnik AG**

Industriegebiet Matten | 4458 Eptingen | Switzerland
Tel: +0622851010 | Fax: +0622851020
E-Mail: info@nestag.com

**TYROLIT POLAND SP. Z O.O.**

Bialolecka 233A | 03-253 Warsaw | Poland
Tel: +48 22 814 22 02 | Fax: +48 22 814 22 03
www.tyrolit.com

**TYROLIT S.A.**

Avda. 3a del Parc Logístic, nr. 26 | Parc Logístic de la
Zona Franca | E-08040 Barcelona | Spain
Tel: +34 93 223 98 20 | Fax: +34 93 223 98 27
www.tyrolit.es

**TYROLIT S.A.S.**

Z.I. Rémy - 13 rue des Frères Rémy | P.O. Box 60509
57205 Sarreguemines Cedex | France
Tel: 1 33 (0)3 872766 70 | Fax: 1 33 (0)3 872766 71
www.tyrolit.com

**TYROLIT VINCENT S.P.A.**

Via dell' Elettronica 6 | 36016 Thiene (VI) | Italy
IT: Tel: +39 0445 35 99 12 | Fax: +39 0445 370 84 3
SM: Tel: +39 0445 35 99 11 | Fax: +39 0445 370 84 2
www.tyrolit.com

**TYROLIT THAI DIAMOND CO., LTD**

1550 New Petchburi Road | Thanapoom Tower 20th Floor
10400 Bangkok | Thailand
Tel: +6624021733 | Fax: +6622517863
www.tyrolit.com

TYROLIT SCHLEIFMITTELWERKE SWAROVSKI K.G.

Swarovskistraße 33 | 6130 Schwaz | Austria

Tel +43 5242 606-0 | Fax +43 5242 63398

Our **worldwide subsidiary companies** can be found
on our website at www.tyrolit.com



Follow us on Facebook
[facebook.com/TYROLIT](https://www.facebook.com/TYROLIT)